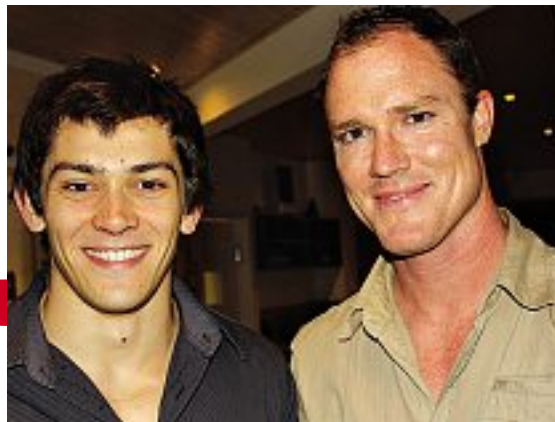




ONE FOR CLIENTS AND STAFF: Rochell Robertson, Yuki Smith and Sarah Geyer enjoy the party for OGE Architects and property valuers Smith and Geyer at One on La Balsa, Pt Cartwright.



Nick Calligaris, left, and Greg King of OGE.



Craig Smith and Glen Grimish of CBRE.



Greg Smith and Pete Sparkes.

Valuation firm places high value on accuracy

Smith and Geyer celebrate first Christmas with combined party

IN April 2011 Smith and Geyer Property Valuers officially opened on the Sunshine Coast after rebranding their former valuation practice. Owners Craig Smith and Paul Geyer saw a gap in the valuation market left by small to medium-sized firms being taken over by national companies.

They believe there will always be a need for a firm that produces high-quality accurate advice while being nimble enough not to compromise time.

The backbone of Smith and Geyer is the friendship that began when Craig and Paul studied property at University of Queensland

before gaining experience in various valuation practices across three states, including extensive time in one of Melbourne's leading property firms.

They later identified that the Sunshine Coast offered not only the perfect place to bring up their families, but also an area that could support their business.

As with many small businesses on the Sunshine Coast, 2011 has had some hardships and sacrifice.

However, Smith and Geyer are excited about their prospects in 2012.

Their primary focus for the coming year will be on continuing to service their current clients before chasing more business.

They want to explore technological advancements to enable them to better service their clients while signing a third body to quality-assess their work.

Smith and Geyer held a combined Christmas party at One on La Balsa at Pt Cartwright, with John Robertson of OGD Group (Architecture).

The night was a celebration of 2011 for clients and staff and provided an opportunity for networking between the two businesses.



Shane and Liz Leadbetter with John Robertson of OGE Architects.



Gregg Pienaar, of Commonwealth Bank, Graeme King of OGE and Paul Geyer of Smith and Geyer.